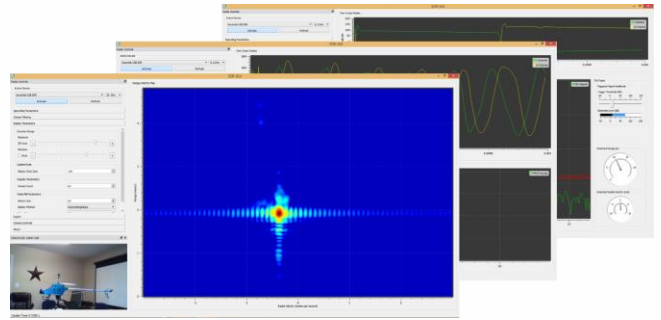


## SDR-GUI

The Graphical User Interface (SDR-GUI) is included with every purchase of a SDR Evaluation Kit.

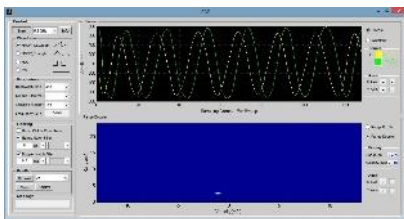
SDR-GUI gives users access to selecting various options on signal waveforms, operating parameters, filtering types, and data recording. It is capable of showing graphical representation of signals in time domain, frequency domain, combined time and frequency domain in real time.



## FEATURES

- Control panel and graphic panel
- Digital camera ready
- Activate SDR hardware device
- Activate Surveillance Camera
- Selection of operation mode
- Selection of signal waveform
- Selection of signal parameters
- Selection of display mode
- Selection of stream filtering
- Selection of display dynamic range
- Selection of display update rate
- Camera control
- Export data

We also offer a MATLAB version for academic research groups upon request. This version has the most similar features as our regular SDR-GUI version. With the SDR Evaluation Kits, the MATLAB GUI version allows users to modify MATLAB source codes to implement users developed signal processing and analysis tools. Please contact us to request a copy of our MATLAB GUI.



**Ancortek Inc.**  
11092 B Lee  
Highway Suite 104  
Fairfax, VA 22030

**+1-703-531-8997**  
info@ancortek.com  
[www.ancortek.com](http://www.ancortek.com)

**We offer customization!**  
Please contact us regarding your  
custom development needs.